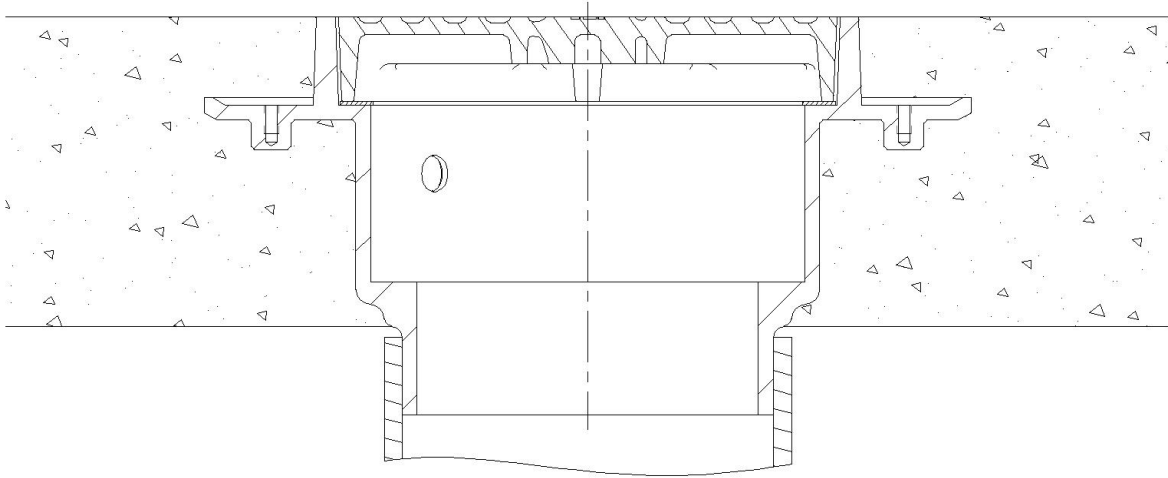




CO3100 CLEANOUT INSTALLATION INSTRUCTIONS



INSTALLATION INSTRUCTIONS FOR CO3100

The Sun CO3100 Clean Out can be installed in non-membrane floor construction. The drainage pipe is run to an elevation where the finish clean out top will be slightly below the finish floor elevation. All adjustment must be made by lengthening or shortening the pipe. Dimensional data for all drain heights and outlet types are shown on Sun Submittal Drawings and the Sun Drainage website. The O-ring or gasketed joints shall comply with ASTM C564, C1440, or CSA B602.

The clean out body is secured to the pipe with any of three connections; Threaded, No-Hub, or Push On. The type of connection should be specified upon ordering any Sun drain. Once the drain is set and leveled in place, concrete can be poured to the finish elevation. The finished surface of the cover should be protected through all phases of construction by the use of cardboard, tape or other protective materials applied by the plumber.