

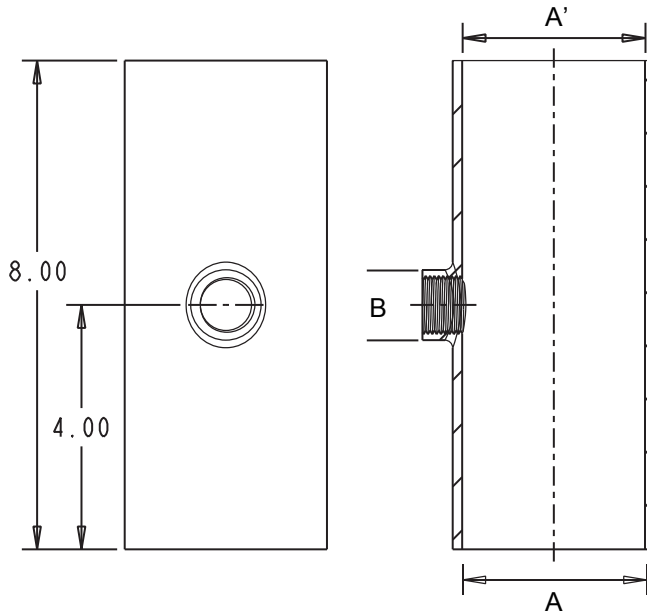
S7001

TRAP PRIMER ADAPTER
NO HUB x NO HUB

LOCATION: _____

Specification & Function

Specification: SUN® S7001 Trap Primer Adapter, coated cast iron body with 1/2" female thread side inlet trap primer connection.



Pipe Size

SUFFIX	DESCRIPTION
-2	2" (51) Pipe Size
-3	3" (76) Pipe Size
-4	4" (102) Pipe Size

Options

SUFFIX	DESCRIPTION
<input type="checkbox"/> -G	Galvanized Cast Iron

Product Desig.	Dimensions in Inches		Approx. Wt. Lbs.
	A'xA	B	
-2	2	1/2	3
-3	3		4
-4	4		6

PROJECT: _____

CONTRACTOR: _____